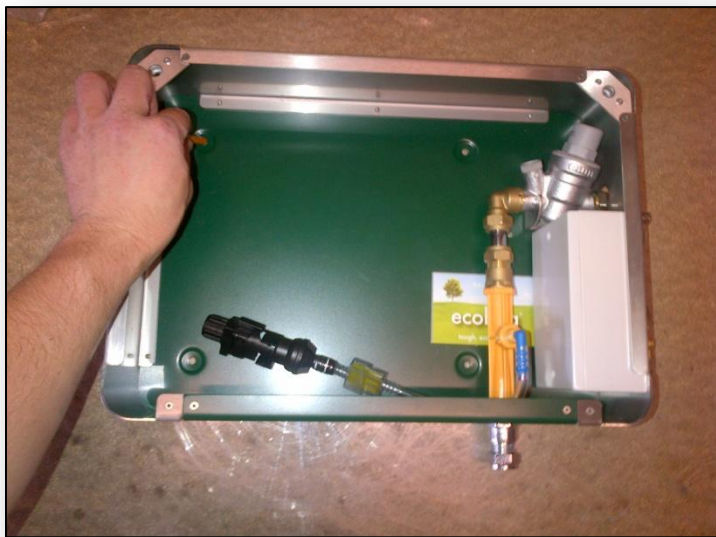
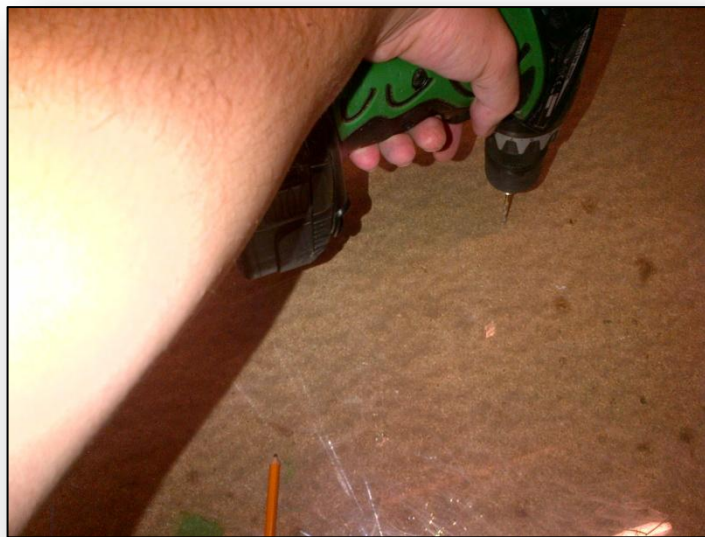


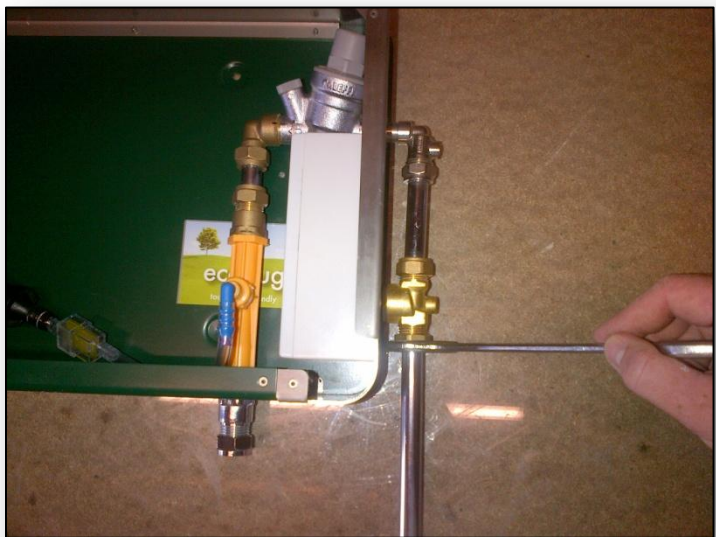
GDII Installation Instructions



Step 1: Using the GDII as a stencil, mark the four drill holes onto the wall

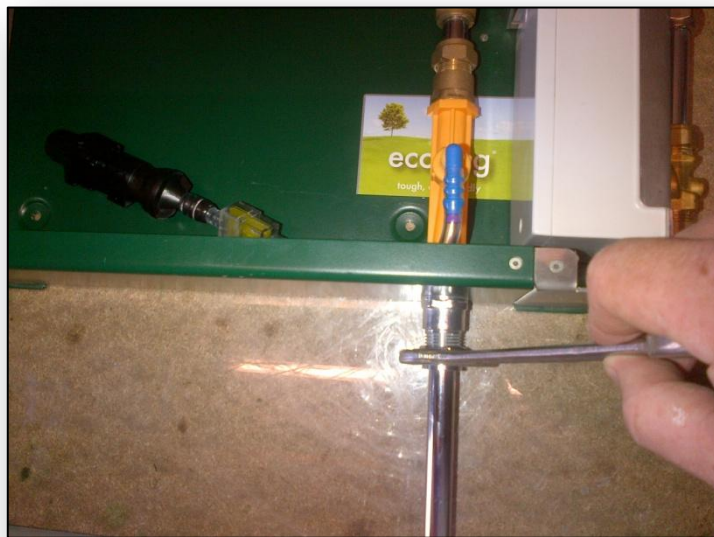


Step 2: Drill the holes for the supplied anchors and secure the GDII to the wall with the screws supplied

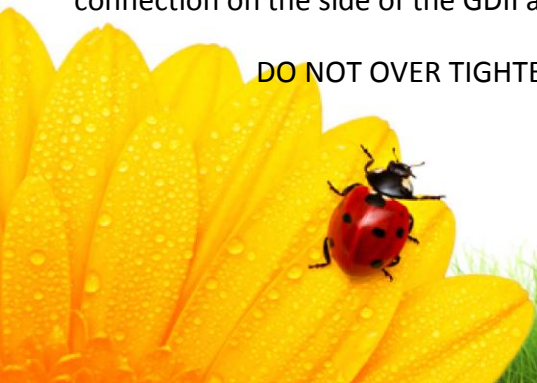


Step 3: Connect 15mm water feed pipe to the connection on the side of the GDII and tighten

DO NOT OVER TIGHTEN



Step 4: Connect 15mm pipe to the connection at the bottom of the GDII and tighten. Feed other end of this pipe into the waste pipe





Step 5: Remove maroon cover from the top of the Bag in Box tap and remove white tag from the bottom of the tap



Step 6: Attach the connector from the GDII over the bag in box tap



Step 7: Tighten connector



Step 8: Turn on water supply to the GDII.

Your GDII is now ready to use and will start working at 10pm!

